

# TREND ALERT

Trefle mirror\*  
by India Mahdavi;  
ralphpucci.net.



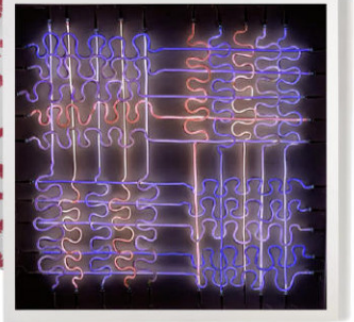
Squiggle necklace by  
David Forlano  
and Steven Ford;  
artfulhome.com.



Kerlan linen\*  
by Bernard Thorp;  
starkfabric.com.



Vermiculation  
at the Louvre



Entangled Light  
neon work by  
Mary Wallis and  
Suzanne Tick;  
marywallis.com.



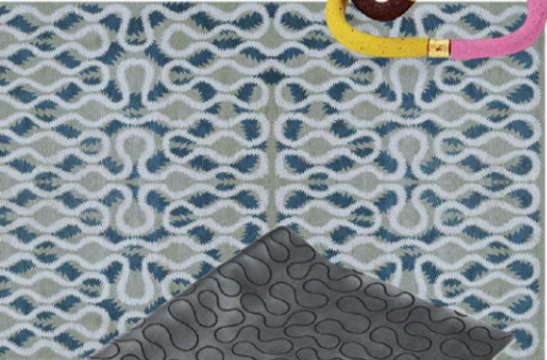
Glazed stoneware  
urn by Per Weiss;  
maisongerard.com.

## VERMICELLI

*From the walls of Renaissance palazzos to today's high-fashion runways, this entrancing squiggly motif is always ahead of the curve.*

BY HANNAH MARTIN

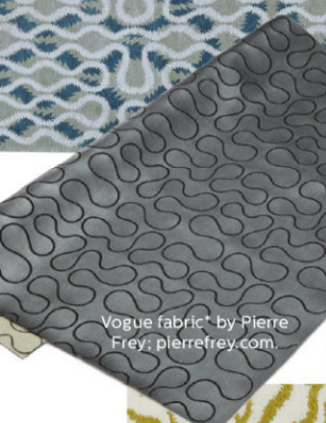
Squiggle Blue rug by  
Vivienne Westwood  
for the Rug Company;  
therugcompany.com.



Rope Embroidery clutch  
by Stella McCartney;  
stellamccartney.com.



Vogue fabric\* by Pierre  
Frey; pierrefrey.com.



Oval Meander cocktail  
table by Mattia Bonetti;  
paulkasmingallery.com.

Bittersweet silk\* by  
Nina Campbell for  
Osborne & Little;  
osborneandlittle.com.



Sterling ID bangle  
by Georg Jensen;  
georgjensen.com.

Blue Coral dinner  
plate by John Derian  
for Astier de Villatte;  
johnderian.com.



Crista top and  
Bordeaux Parvis  
pants by Dries Van  
Noten from fall 2014;  
driesvannoten.be.



Corallina linen\* by Alessandra  
Branca for Schumacher;  
fschumacher.com.



Winding  
Way linen\*  
by Suzanne  
Rheinstejn  
for Lee Jofa;  
leejofa.com.