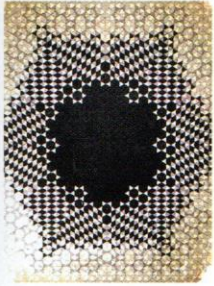
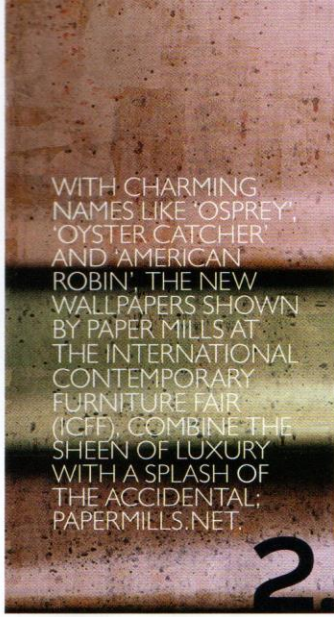


1. This mesmeric 'Nebulae' rug is by *Déjate Querer*, part of the *México Territorio Creativo* exhibit at *Wanted Design Manhattan*. Each felt facet is hand-sewn into the pattern, the restrained tones making it all the more impactful; [dejatequerer.mx](http://dejatequerer.mx).



2. WITH CHARMING NAMES LIKE 'OSPREY', 'OYSTER CATCHER' AND 'AMERICAN ROBIN', THE NEW WALLPAPERS SHOWN BY PAPER MILLS AT THE INTERNATIONAL CONTEMPORARY FURNITURE FAIR (ICFF), COMBINE THE SHEEN OF LUXURY WITH A SPLASH OF THE ACCIDENTAL; [PAPERMILLS.NET](http://PAPERMILLS.NET).



DESIGN SPECIAL

3.

One of the most creatively stimulating stands at ICFF was that of New York-based Apparatus Studio, making its first foray into furniture with Portal, a collection of tables (dining table pictured) that "feel modern with a taste of the ancient". New lighting included this 'Link' porcelain pendant, a collaboration with ceramicist Alice Goldsmith; [apparatusstudio.com](http://apparatusstudio.com).



# STYLE CITY

*VL's* picks from NYC x Design, the Big Apple's citywide showcase of everything from rug weaving to lighting design.

7.

New York firm Matter has built its reputation on thoughtful collaborations and local manufacture, and these new additions to its in-house Matter Made collection tick both boxes. Philippe Malouin's 'Type Cast' chair plays on an elegant geometry, while Ana Kraš's table range (dining table pictured) is called Slon, meaning 'elephant' in her native Serbian; [mattermatters.com](http://mattermatters.com).



4.

The Balustrade vessels by Danish ceramicist Turi Heisselberg Pedersen were shown as part of J Lohmann Gallery's stand at Collective Design, their organic forms and tonal play of colour making them a seductive grouping; [jlohmanngallery.com](http://jlohmanngallery.com).



New York design studio Bower has embraced a playful approach. Its Contour side tables, shown at Sight Unseen Offsite in lacquered, moulded ply with tinted glass tops, are a great example of this, with their various configurations, both interconnecting and separate; [bowernyc.com](http://bowernyc.com).



FASHION DESIGNER RICK OWENS HAS BEEN MAKING FURNITURE SINCE 2007, AND WHILE MOST OF HIS PIECES HAVE A BRUTALIST BEAUTY, THE 'ALCHEMY' CHAIR (RIGHT), SHOWN ON LMD/STUDIO'S STAND AT COLLECTIVE DESIGN, EXPLORES A MORE REFINED SILHOUETTE; [LMD-STUDIO.COM](http://LMD-STUDIO.COM).

6.

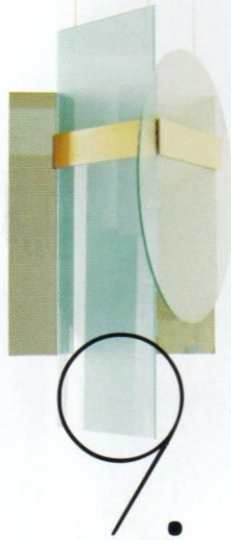




# DESIGN SPECIAL

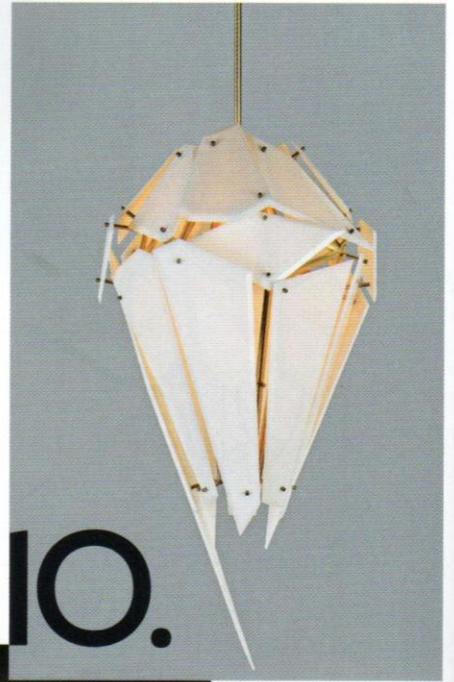
'BRASSCLOTH' WAS AMONG THE COLLECTION THAT WON CALICO WALLPAPER BEST WALLCOVERINGS IN THE 2015 ICFE EDITORS' AWARDS. INSPIRED BY DIP-DYEING, IT'S AVAILABLE IN A SERIES OF IRIDESCENT, GRADATED HUES (MIDNIGHT BLUE PICTURED). THE COMBINATION OF ARTISANAL METHODS AND DIGITAL TECHNOLOGIES RESULTS IN A PATTERN THAT'S ENTIRELY CUSTOMISABLE, AND NON-REPEATING; CALICOWALLPAPER.COM.

8.



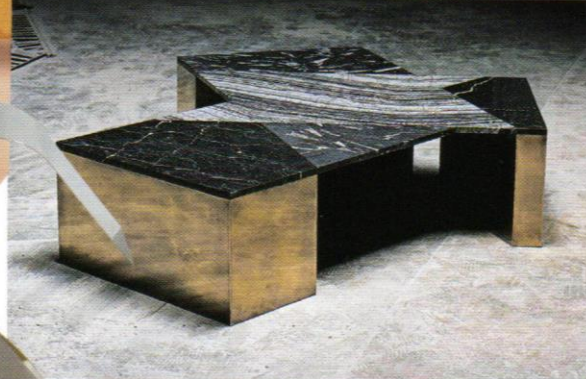
Mary Wallis, who hails from Melbourne, showed her new lighting designs at ICFE under the banner of Lindsey Adelman Studio, with whom she's been collaborating. The most striking of these, the 'Edie' chandelier (pictured below in white glass), is inspired by bird tail-feathers and has a sense of controlled disorder; lindseyadelman.com.

9. Fresh from a move from Seattle to New York, the duo behind Ladies & Gentlemen Studio haven't lost any momentum. Their joyfully inquisitive approach to design results in carefully calibrated juxtapositions of form and material, such as the beautiful 'Kazimir' light (above), a collaboration with glass artist John Hogan exhibited at Sight Unseen Offsite; ladiesandgentlemenstudio.com.



10.

11. DETROIT-BASED NINA CHO'S WORK IS ALL ABOUT REDUCTION TO ESSENTIAL FORMS. FOR THE BENT MIRROR SERIES, LAUNCHED AT SITE UNSEEN OFFSITE, FOR EXAMPLE (TWO OF WHICH ARE PICTURED AT RIGHT), CHO CHOOSES A SERIES OF SINGLE-MATERIAL EXECUTIONS TO BLUR THE LINE BETWEEN FUNCTION AND OBJECT; NINACHO.COM.

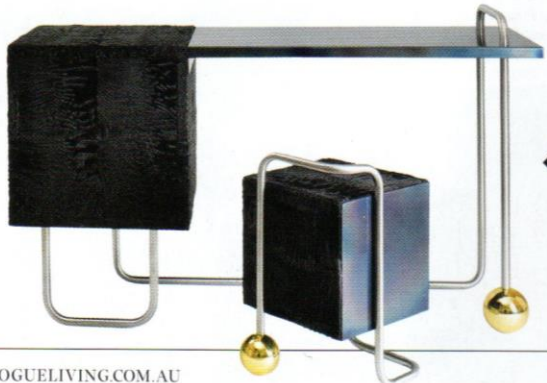


12. Los Angeles-based Brian Thoreen's marble and brass coffee table — part of Sight Unseen's Offsite's satellite exhibition at Collective Design — was something of a tour de force, its artisanal craftsmanship balancing monolithic form; brianthoreen.com.

13. New York's Egg Collective launched its new 'Russell' dining table at Collective Design, with a spectacular centerpiece of paper roses in Yves Klein blue (pictured) by artist Daniel Sean Murphy, and cobalt-blue Wu side table/stools. The group also showed work, including the 'Oscar' dining table, at Wanted Design Manhattan, where it was inaugural recipient of the American Design Honors program; eggcollective.com.



14. Presented by Paris's Galerie Gosserez at Collective Design, 'Fur Play' is a limited-edition desk, stool and chair set by Christian Lacroix creative director Sacha Walckhoff. Astrakhan lamb pelt mixes with steel and brass in pieces that are part sculpture and part furniture to create an interplay of sensuous materials; uk.galeriegosserez.com.



12.